

User's Manual for CoPeck

What is "CoPeck"?

- "CoPeck" is application software for getting a report of the printer.
- This utility has many benefits:
 - ✧ Customers can run the application and email the report to dealers and DG service staff.
 - ✧ The file is protected so customers are unable to open and see the report.
 - ✧ It eliminates a field service visit just to pull a report.

Supported Environment

- Windows 10 and Windows 8.1

How to Install

- Execute Setup.exe and follow the wizard instruction.

How to Uninstall

- Uninstall CoPeck from control panel of windows.

Supporting Models

- <Type1>
 - ✧ PROII/ProII(V) Series
 - ✧ SP-540V/300V/300
 - ✧ FLJ-300
 - ✧ SJ-1000/1045
- <Type2>
 - ✧ AJ-1000/740/1000i/740i
 - ✧ FP-740
- <Type3>
 - ✧ XC-540/540MT, XJ-740/640/540
 - ✧ VP-540/300/540i/300i
 - ✧ LEC-540/300/330/300A, LEJ-640
 - ✧ RS-640/540
 - ✧ FH-740
 - ✧ XR-640
- <Type4>
 - ✧ SP-540i/300i
 - ✧ VS-640/540/420/300/640i/540i/300i

- ◇ LEF-300/200/20/12/12i
- ◇ LEF2-300/200
- ◇ RA-640, RE-640
- <Type5>
 - ◇ XF-640
 - ◇ RF-640
 - ◇ RT-640
 - ◇ EJ-640
 - ◇ XT-640
 - ◇ VG-640/540
 - ◇ SG-540/300
 - ◇ VG2-640/540
 - ◇ SG2-540/300
 - ◇ LEC2-300

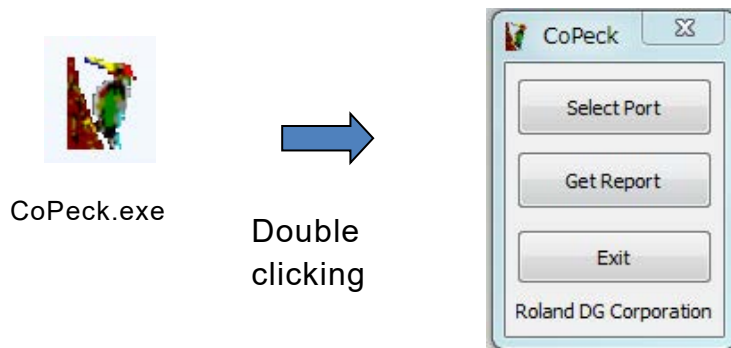
How to use

➤ Preparation for printer

- ◇ Turn on Main Power Switch and Turn off Sub Power Switch. Please be confirmed that there is no printing data transmission between the printer and PC.

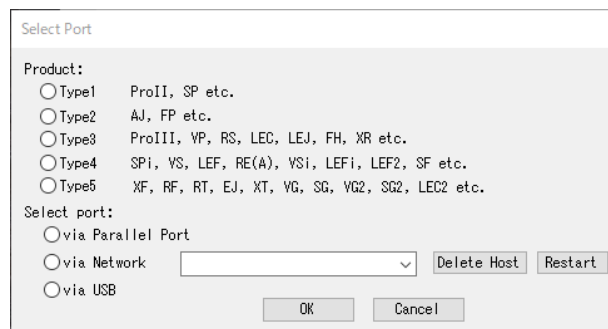
➤ Starting CoPeck

- ◇ Double-click CoPeck.exe and you can see the dialog as shown below.



➤ Selecting models and connection port

- ◇ Open the [Select Port] dialog by clicking the "Select Port" button. Select the type of the target printer in Product selection. For the details, refer to [Supported Models] in the previous page.

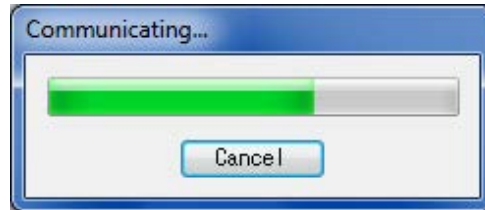


Imagine.

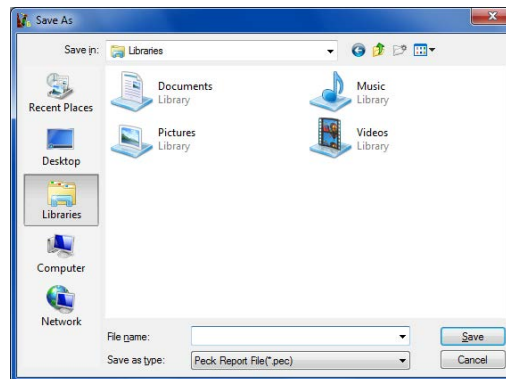
- ✧ Select connection port. If you select [via Network], type in IP Address. Eliminate 0 numbers if the higher digit of IP address is(are) 0(s). (For example, 130.101.091.003 -> 130.101.91.3)

➤ **Getting a report from your printer.**

- ✧ Click the [Get Report] button.

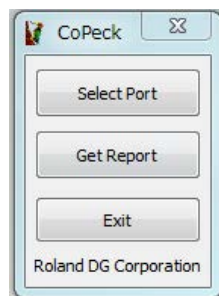


- ✧ Save it as a file.



➤ **Finishing CoPeck.**

- ✧ Finish CoPeck by clicking the [Exit] button.



Version 7.7.0
May 27th, 2020

Imagine.